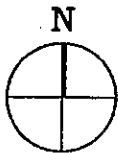
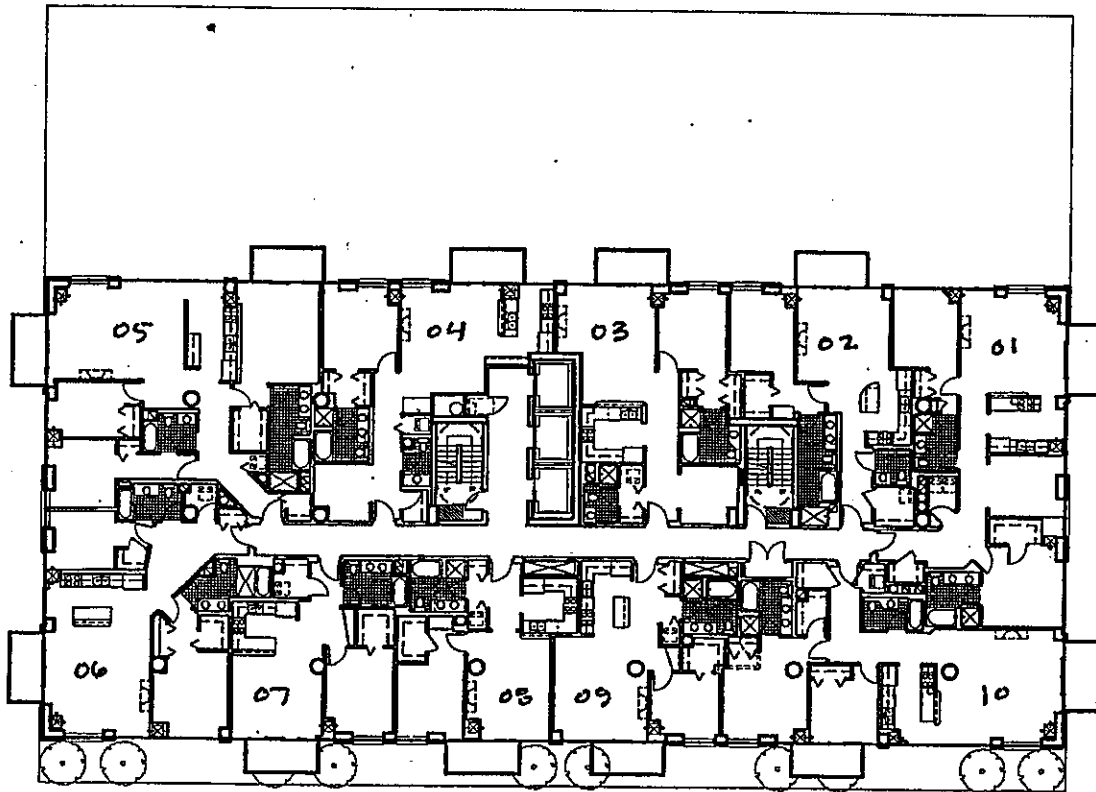


Floor Plan
(153) Prairie District Homes Tower Residences

Order: DN7C5G4PW
Address: 1717 S Prairie Ave Apt 1010
Order Date: 10-04-2022
Document not for resale
HomeWiseDocs



7TH-22ND FLOOR PLAN

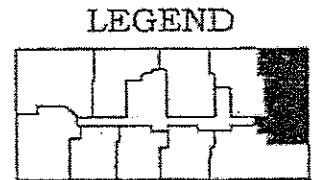
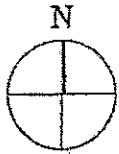
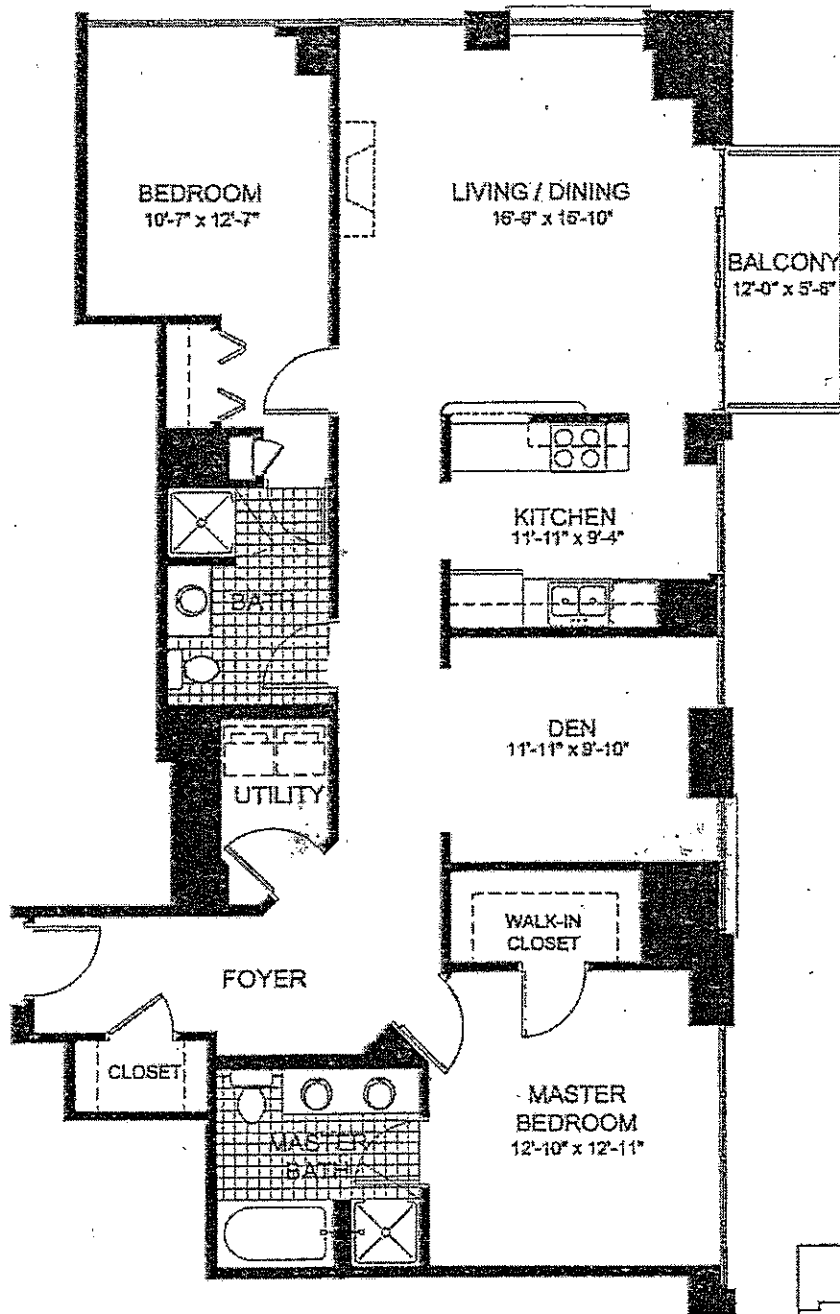
THE TOWER RESIDENCES AT PRAIRIE DISTRICT HOMES

LEGACY DEVELOPMENT GROUP 312.360.1818 WWW.LEGACYDEVELOPER.COM

Order: DN7C5G4PW

Address: 1717 S. Prairie Ave Apt 1010

These plans are NOT FOR CONSTRUCTION; construction documents may differ from these plans as a result of product modifications, corrections and improvements. Mechanical, electrical and plumbing equipment locations will vary due to field conditions. Finished dimensions will vary slightly from those listed on these plans and the total square footage is approximate. The developer reserves the right to modify the plans at any time.



UNIT '1'

TYPICAL FLOOR

1474 SF 2 BEDROOM/2 BATH

THE TOWER RESIDENCES AT PRAIRIE DISTRICT HOMES

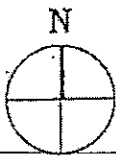
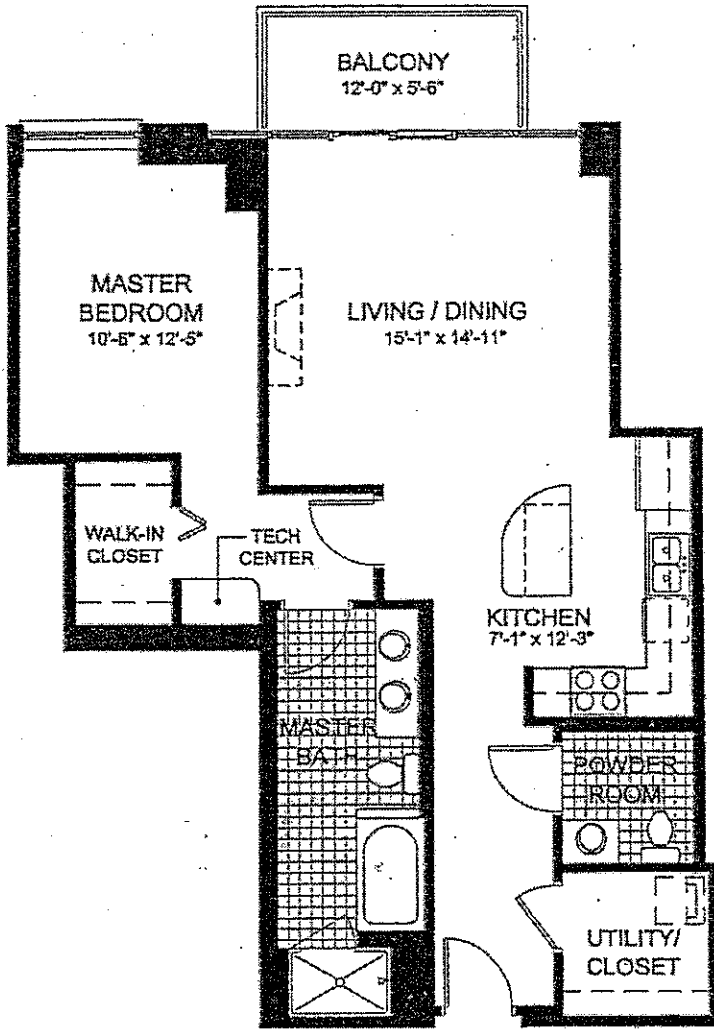
LEGACY DEVELOPMENT GROUP 312.360.1818 WWW.LEGACYDEVELOPER.COM

Order: DNZG5G4PW
Address: 1717 S Prairie Ave Apt 1010

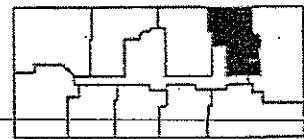
Order Date: 10-04-2022

Document not for resale
HomeWiseDocs

These plans are NOT FOR CONSTRUCTION; construction documents may differ from these plans due to product modifications, corrections and improvements. Mechanical, electrical and plumbing equipment locations will vary due to field conditions. Finished dimensions will vary slightly from those listed on these plans and the total square footage is approximate. The developer reserves the right to modify the plans at any time.



LEGEND



UNIT '2'

TYPICAL FLOOR

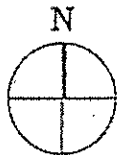
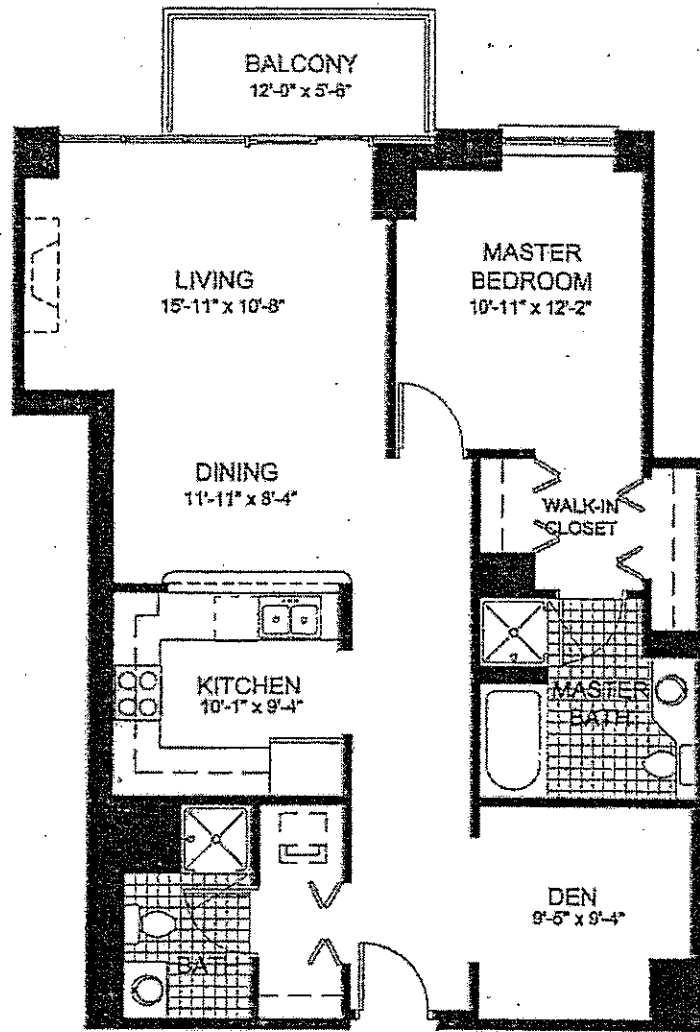
942 SF 1 BEDROOM/1 1/2 BATH

THE TOWER RESIDENCES AT PRAIRIE DISTRICT HOMES

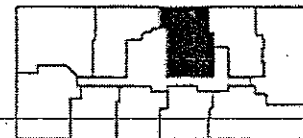
LEGACY DEVELOPMENT GROUP 312.360.1818 WWW.LEGACYDEVELOPER.COM

Order: DN7C5G4PW
These plans are NOT FOR CONSTRUCTION; construction documents may differ from these plans due to product modifications, corrections and improvements. Mechanical, electrical and plumbing equipment locations will vary due to field conditions. Finished dimensions will vary slightly from those listed on these plans and the total square footage is approximate. The developer reserves the right to modify the plans at any time.

Order Date: 10-04-2022
Document not for resale
HomeWiseDocs



LEGEND



UNIT '3'

TYPICAL FLOOR

1070 SF 1 BEDROOM/1 1/2 BATH W/DEN

THE TOWER RESIDENCES AT
PRAIRIE DISTRICT HOMES

LEGACY DEVELOPMENT GROUP 312.360.1818 WWW.LEGACYDEVELOPER.COM

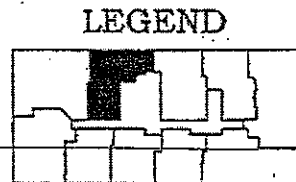
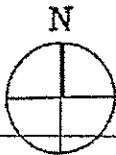
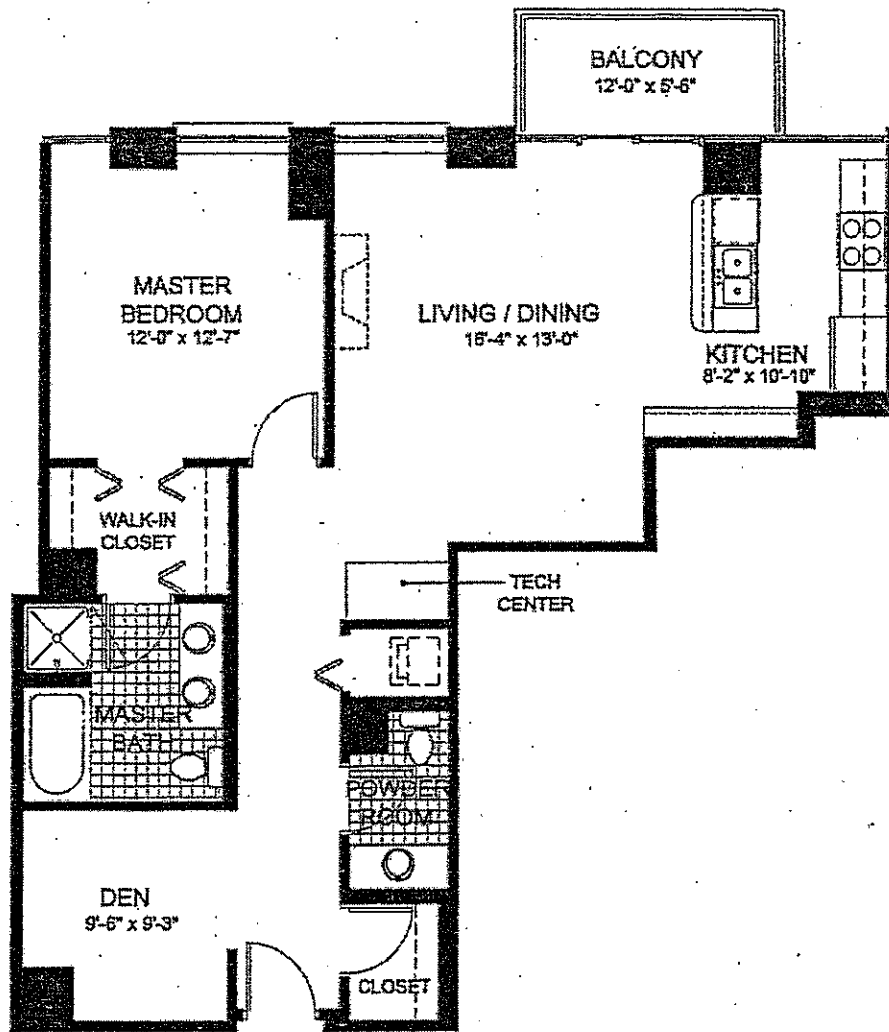
Order: BN7C5G4PW

These plans are NOT FOR CONSTRUCTION; construction documents may differ from these plans due to product modifications, corrections and improvements. Mechanical, electrical and plumbing equipment locations will vary due to field conditions. Finished dimensions will vary slightly from those listed on these plans and the total square footage is approximate. The developer reserves the right to modify the plans at any time.

Order Date: 10-04-2022

Document not for resale

HomeWiseDocs



UNIT '4'

TYPICAL FLOOR

1052 SF 1 BEDROOM/1 1/2 BATH W/DEN

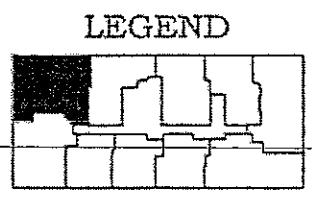
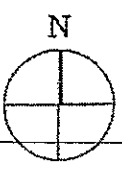
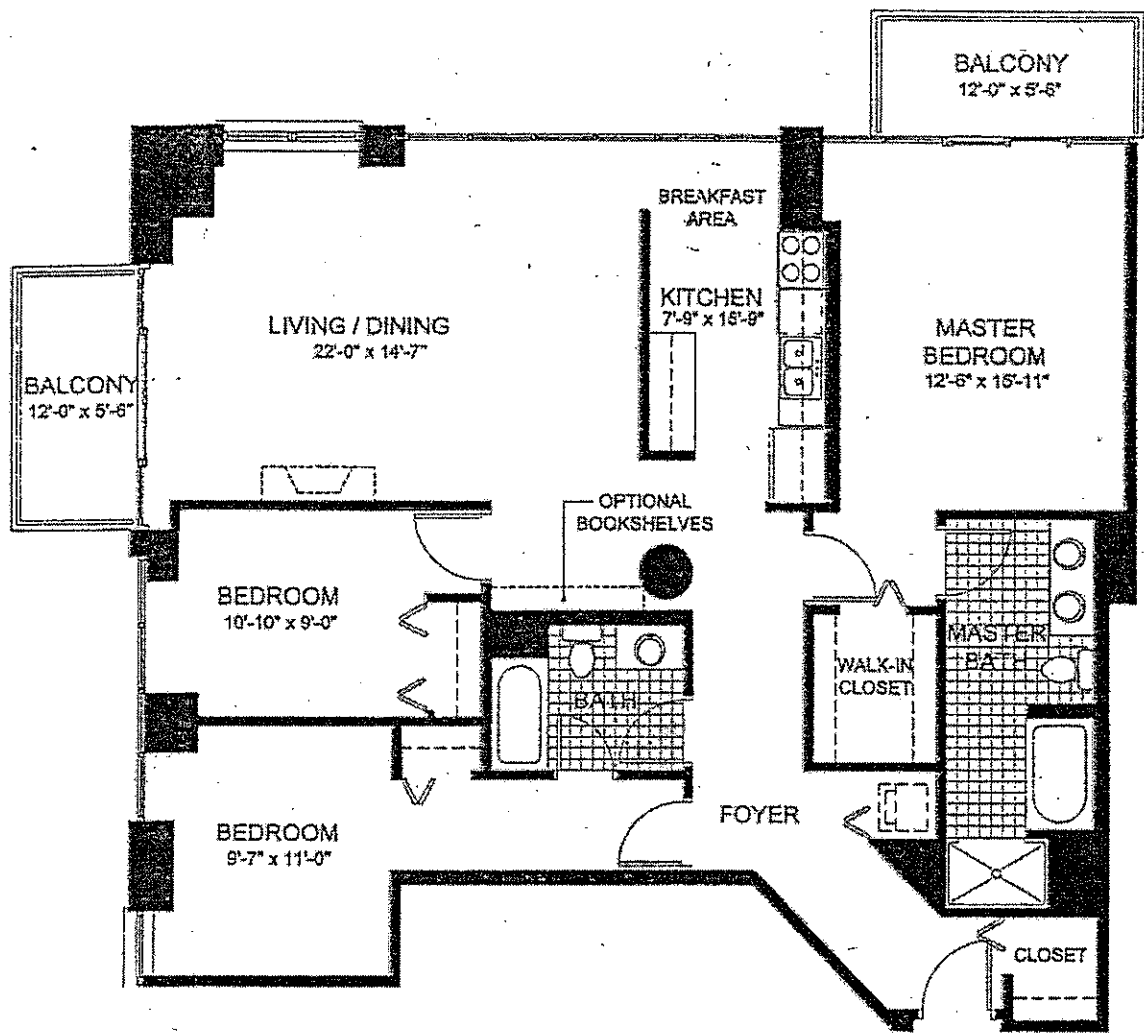
**THE TOWER RESIDENCES AT
PRAIRIE DISTRICT HOMES**

LEGACY DEVELOPMENT GROUP 312.360.1818 WWW.LEGACYDEVELOPER.COM

Order: DNT76564PW

Order Date: 10-04-2022
Document not for resale
HomeWiseDocs

These plans are NOT FOR CONSTRUCTION. Construction documents may differ from these plans due to field conditions, product modifications, corrections and improvements. Mechanical, electrical, and plumbing equipment locations will vary due to field conditions. Finish dimensions will vary slightly from those indicated on these plans and the total square footage is approximate. The developer reserves the right to modify the plans at any time.



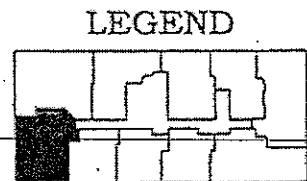
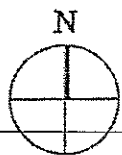
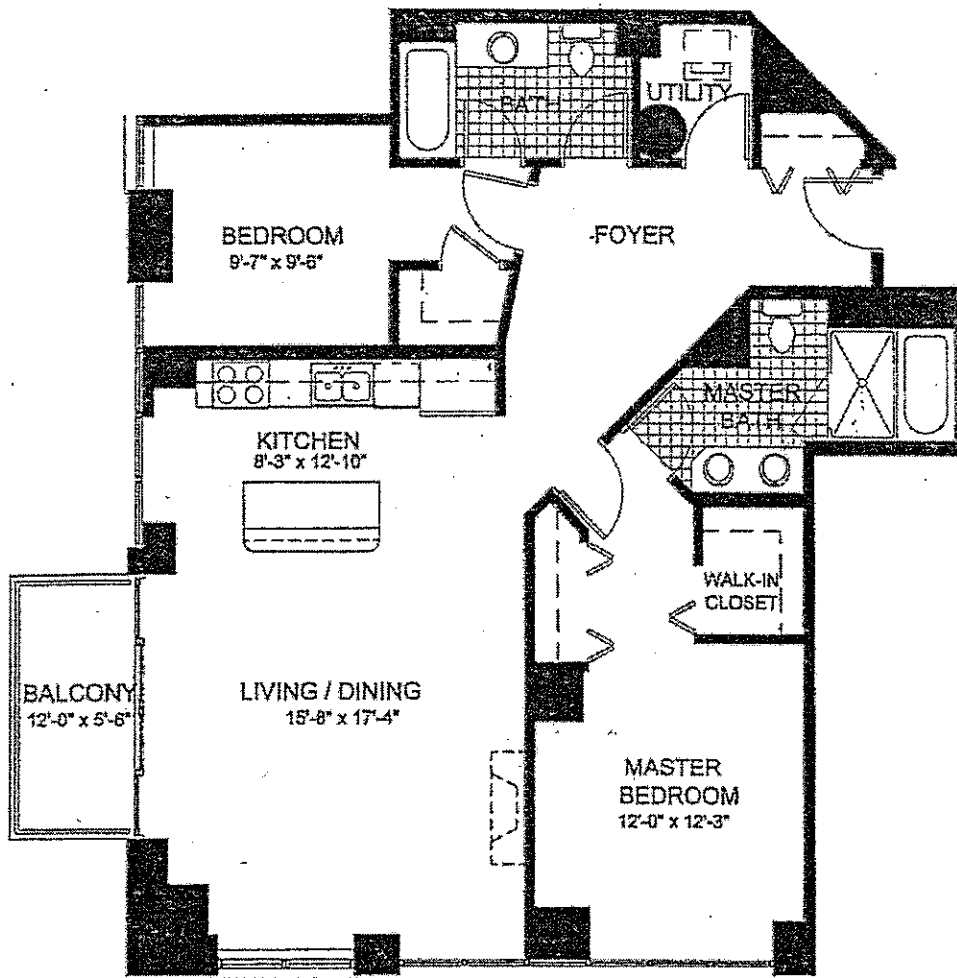
UNIT '5'
 TYPICAL FLOOR
 1570 SF 3 BEDROOM/2 BATH
THE TOWER RESIDENCES AT
PRAIRIE DISTRICT HOMES

LEGACY DEVELOPMENT GROUP 312.360.1818 WWW.LEGACYDEVELOPER.COM

Order: DN7C5G4PW

Address: 1717 S Prairie Ave Apt 1010

These plans are NOT FOR CONSTRUCTION; construction documents may differ from these plans due to product modifications, corrections and improvements. Mechanical, electrical and plumbing equipment locations will vary due to field conditions. Finished dimensions will vary slightly from those listed on these plans and the total square footage is approximate. The developer reserves the right to modify the plans at any time.



UNIT '6'

TYPICAL FLOOR
1277 SF 2 BEDROOM/2 BATH

THE TOWER RESIDENCES AT PRAIRIE DISTRICT HOMES

LEGACY DEVELOPMENT GROUP 312.360.1818 WWW.LEGACYDEVELOPER.COM

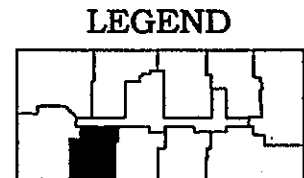
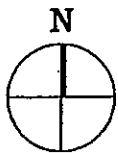
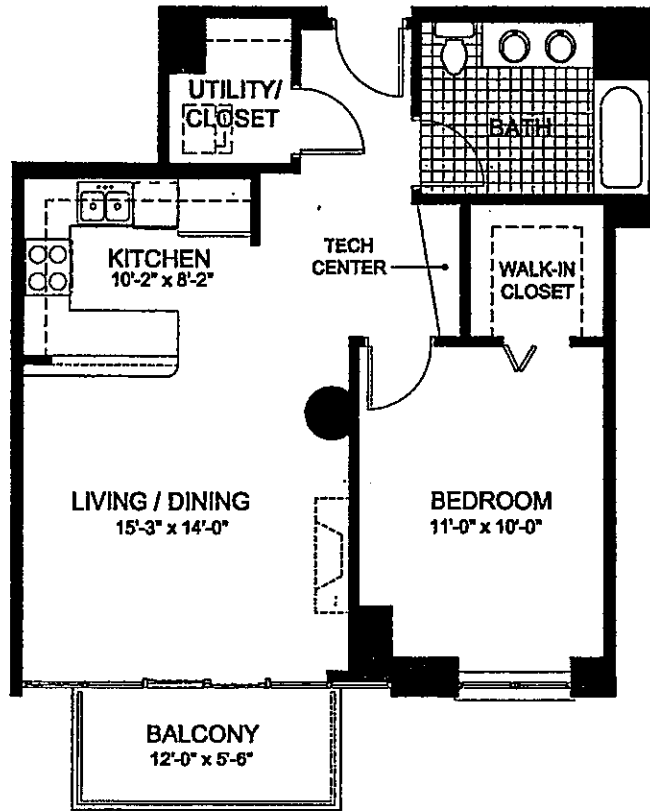
These plans are NOT FOR CONSTRUCTION; construction documents may differ from these plans and result of product modifications, corrections and improvements. Mechanical, electrical and plumbing equipment locations will vary due to field conditions. Finished dimensions will vary slightly from those listed on these plans and the total square footage is approximate. The developer reserves the right to modify the plans at any time.

Order: DN7C5G4PW

Address: 1717 S. Prairie Ave Apt 1010

Order Date: 10-04-2022

Document not for resale
HomeWiseDocs



UNIT '7'
 TYPICAL FLOOR
 779 SF 1 BEDROOM/1 BATH

**THE TOWER RESIDENCES AT
 PRAIRIE DISTRICT HOMES**

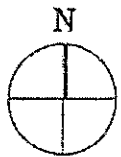
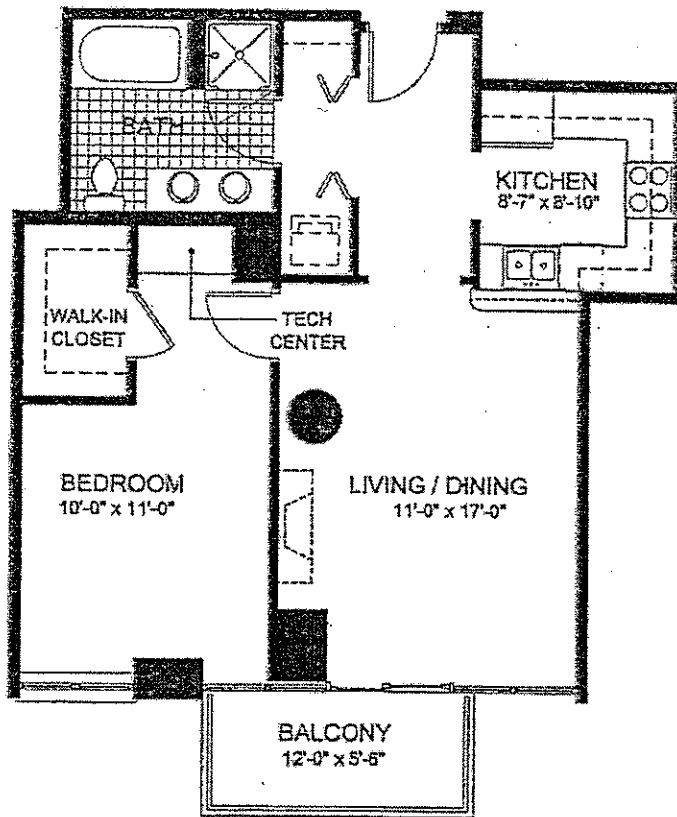
LEGACY DEVELOPMENT GROUP 312.360.1818 WWW.LEGACYDEVELOPER.COM

Order: DN7C5G4PW

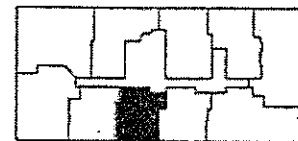
Address: 1717 S Prairie Ave Apt 1010

These plans are NOT FOR CONSTRUCTION; construction documents may differ from these plans due to field conditions. Finished dimensions will vary slightly from those shown on these plans and the total square footage is approximate. The developer reserves the right to modify the plans at any time.

Document not for resale
 HomeWiseDocs



LEGEND



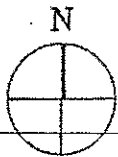
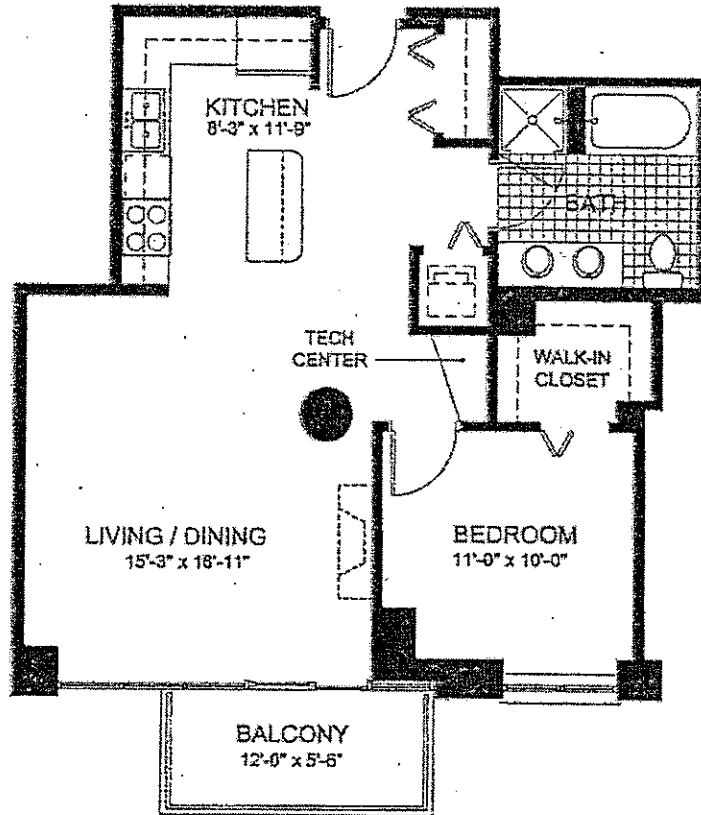
UNIT '8'
 TYPICAL FLOOR
 766 SF 1 BEDROOM/1 BATH

THE TOWER RESIDENCES AT
 PRAIRIE DISTRICT HOMES

LEGACY DEVELOPMENT GROUP 312.360.1818 WWW.LEGACYDEVELOPER.COM

These plans are NOT FOR CONSTRUCTION; construction documents may differ from these plans and also result of product modifications, corrections and improvements. Mechanical, electrical and plumbing locations will vary due to field conditions. Finished dimensions will vary slightly from those listed on these plans and the total square footage is approximate. The developer reserves the right to modify the plans at any time.

Order: DN7C5G4PW
 Address: 1717 S Prairie Ave Apt 1010
 Order Date: 10-04-2022



LEGEND



UNIT '9'

TYPICAL FLOOR
786 SF 1 BEDROOM/1 BATH

THE TOWER RESIDENCES AT PRAIRIE DISTRICT HOMES

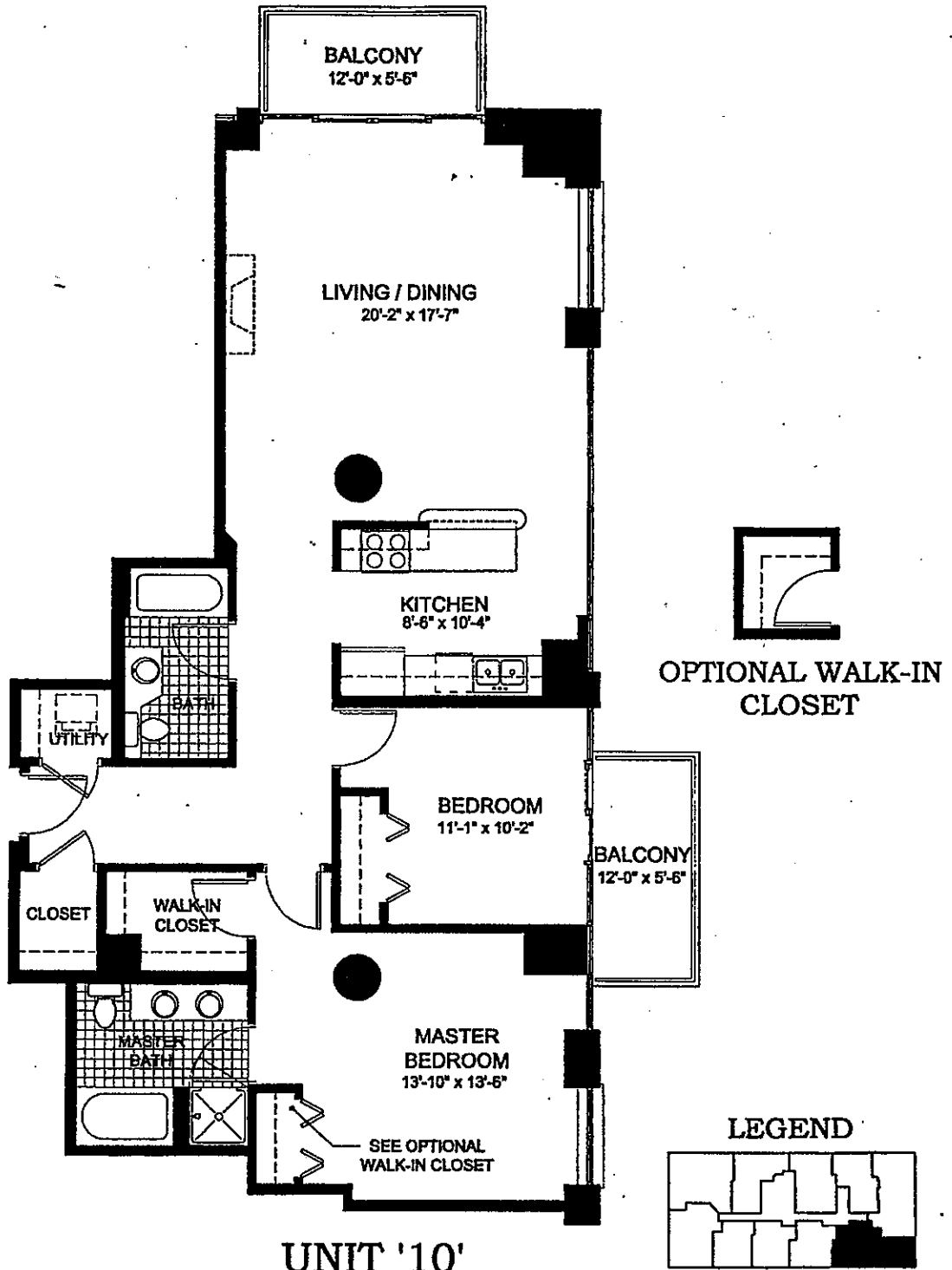
LEGACY DEVELOPMENT GROUP 312.360.1818 WWW.LEGACYDEVELOPER.COM

Order: DN7C5G4PW

Address: 1717 S Prairie Ave Apt 1018

These plans are NOT FOR CONSTRUCTION; construction documents may differ from these plans due to product modifications, corrections and improvements. Mechanical, electrical and plumbing equipment locations will vary due to field conditions. Finished dimensions will vary slightly from those listed on these plans and the total square footage is approximate. The developer reserves the right to modify the plans at any time.

Document not for resale
HomeWiseDocs



UNIT '10'
TYPICAL FLOOR
1357 SF 2 BEDROOM/2 BATH

THE TOWER RESIDENCES AT
PRAIRIE DISTRICT HOMES

LEGACY DEVELOPMENT GROUP 312.360.1818 WWW.LEGACYDEVELOPER.COM

Order: DN7C5G4PW

Address: 1717 S Prairie Ave Apt 1010

These plans are NOT FOR CONSTRUCTION; construction documents may differ from these plans as a result of product modifications, corrections and improvements. Mechanical, electrical and plumbing equipment locations will vary due to field conditions. Finished dimensions will vary slightly from those listed on these plans and the total square footage is approximate. The developer reserves the right to modify the plans at any time.